

Parker ASEAN

# THIS IS PARKER

Parker  
ASEAN/Philippines  
**An Introduction**

ENGINEERING YOUR SUCCESS.

# Parker Hannifin Corporation



## Global Leader in Motion and Control

Parker Hannifin is the world's leading diversified manufacturer of motion and control technologies and systems, providing precision-engineered solutions for a wide variety of commercial, mobile, industrial and aerospace markets.

Our focus is on our customers. By improving their productivity and profitability

**A RICH HISTORY**

Parker was founded in 1917 by Arthur Parker and Carl Klamm with one product.

Over the years, we have been awarded more than 8,000 patents for industry-changing components and technologies.



# PARKER AT A GLANCE



**3,000+**  
Product lines



**\$14 billion+**  
In global revenue



**400,000+**  
Customers worldwide



**57,000+**  
Team members worldwide



# ASEAN FOOTPRINT

## PARKER PRESENCE

### Legend:

- Sales Offices
- ★ Value Added Services



Headquartered in Singapore, Parker has a total of **8** offices and **350** employees in the ASEAN region.

-  **SINGAPORE**  
Parker ASEAN (HQ)
-  **MALAYSIA**  
Kuala Lumpur  
Penang
-  **INDONESIA**  
Jakarta  
Balikpapan
-  **THAILAND**  
Bangkok
-  **VIETNAM**  
Ho Chi Minh City
-  **PHILIPPINES**  
Manila



# The way we serve customers



**PARKER HANNIFIN SINGAPORE PTE LTD**



**PARKER HANNIFIN PHILIPPINES**



**PARKER HANNIFIN BRUNEI**

No. 11, Fourth Chin Bee Road,  
Singapore 619702,  
SINGAPORE

Ph : + 65 6887 6300

Fax : + 65 6265 5125



**PARKER HANNIFIN INDUSTRIAL MALAYSIA**

No. 11, Persiaran Pasak Bumi,  
Seksyen U8, Bukit Jelutong Industrial Park,  
40150 Shah Alam, Selangor,  
MALAYSIA

Ph : + 60 3 7849 0800

Fax : + 60 3 7872 4348



**P.T. PARKER HANNIFIN INDONESIA**

Techno Park Block G3/16 BSD (Bumi Serpong Damai),  
Tangerang 15314,  
INDONESIA

Ph : + 62 21 7588 1906

Fax : + 62 21 7588 1907



**PARKER HANNIFIN THAILAND CO., LTD.**



**PARKER HANNIFIN CAMBODIA**



**PARKER HANNIFIN LAOS**



**PARKER HANNIFIN MYANMAR**

1265 Rama 9 Road  
Suanluang, 10250  
Bangkok,  
THAILAND

Ph : +66 2186 7000

Fax : +66 2374 1645



**PARKER HANNIFIN VIETNAM CO., LTD**

43R/10 Ho Van Hue Street, Ward 9,  
Phu Nhuan District,  
Ho Chi Minh City,  
VIETNAM

Ph : + 84 8 3999 1600

Fax : + 84 8 3999 1604



# ORG CHART



Christophe  
Pignatelli  
**COUNTRY MANAGING  
DIRECTOR**  
ASEAN / ANZ

## SALES & OPERATION



Wei Du

**SALES & OPS  
MANAGER**  
SINGAPORE



Brian Kay

**SALES & OPS  
MANAGER**  
MALAYSIA



Noor Mohamed

**SALES & OPS  
MANAGER**  
INDONESIA



Steven Carss

**SALES & OPS  
MANAGER**  
VIETNAM



Alberto Ratilla

**COUNTRY SALES  
MANAGER**  
PHILIPPINES



Narong V.

**ACTING  
MANAGER**  
THAILAND



Michael Zahra

**SALES DIRECTOR**  
AUSTRALASIA

## PRODUCT SALES



Joanne Chong

**ASEAN SALES MANAGER**  
ING Instrumentation Group



Richard Tan

**ASEAN SALES MANAGER**  
PFG Parker Filtration Group



M W Kim

**ASEAN SALES MANAGER**  
FCG Fluid Connectors Group



Jia Chun

**ENGINEERING APP.  
MANAGER**  
MSG Motion Systems Group



Moe Zaw

**PRODUCT SALES MANAGER**  
MSG Motion Systems Group



Jolene Toh

**STRATEGIC PRICING  
MANAGER**  
ASEAN

## SUPPORT



Kok Chong Tan

**FINANCIAL  
CONTROLLER**  
SIVP



Michael Choo

**IT MANAGER**  
ASEAN



Charles Mercier

**LEAN, QUALITY & EHS  
MANAGER**  
ASEAN



Wei Du

**SUPPLY CHAIN  
MANAGER**  
ASEAN



Lawrence Low

**DISTRIBUTION &  
MARKETING MANAGER**  
ASEAN

## AP: FINANCE/HR



Richard Lim

**REGIONAL  
CONTROLLER**  
SOUTH ASIA / FSM /  
INDIA



Julie Zhao

**HR MANAGER**  
ASEAN

# Parker Hannifin SINGAPORE



## SINGAPORE Key Statistics:

Land Area	:	697 km <sup>2</sup>
Population	:	5.88 millions
Medium Age	:	34.3 years old
GDP 2019 (e)	:	1.5% - 2.5%
Total Employee	:	103



11 fourth chin bee road, S619702



# Parker Hannifin Philippines



**Alberto  
Ratilla**  
Ctry Sales Mgr (1C)

4/4



**Amiel  
Cabrera**  
Territory Mgr I



**Dennis  
Trillana**  
Territory Mgr II



**Jeffrey S.  
Mendoza**  
Territory Mgr I



**Samuel T.  
Urita**  
Territory Mgr I





# Our Business

## Partner Philippines

Unit 1 & 2 #99 4th St., Corner C3 Road  
Caloocan City, Metro Manila 1403  
ph: +632 4422244  
fax: +632 3517124  
alt: +632 3094991  
[inq@fluidenergyph.com](mailto:inq@fluidenergyph.com)

### Fluid Energy Philippines Inc.

#### Branches and Affiliates

Trackstar Enterprises Corporation  
D. Tuazon St. Quezon City  
+63 2 364 4197

Harveytec Davao Corporation  
Door 8 JVT Building, F. Bangoy St.,  
Davao City  
Manila Line: 710 4366

Fluid Energy Philippines Inc. - Laguna  
Unit 6 Flying V Gas Station, F. Reyes St.,  
Santa Rosa de Banawe, Sta. Rosa  
Laguna  
Manila Line: 664 9236

Trackstar Hydraulics Supply Inc.  
287 Corner 4th Ave., Rizal Avenue,  
Caloocan City





# WHO WE ARE



# BRAND PROMISE

#1



Parker Hannifin is the **global leader** in motion and control technologies, partnering with its customers to increase their productivity and profitability.



# PARTNERSHIPS IN MOTION

**Partnerships** form a key aspect of the Parker business philosophy. Our success is achieved in partnership with our customers and distributors in 50 countries who extend our reach with the same goals to innovate, improve efficiencies and create intelligent solutions.





# OUR PRODUCTS



# DIVERSIFIED INDUSTRIAL SEGMENT

Parker is present in and around everything that moves. We manufacture precision engineered components and systems which facilitate motion and control for liquids and gas to a variety of global markets.



Parker  
Filtration



Fluid  
Connectors



Motion  
Systems



Engineered  
Materials



Instrumentatio  
n

# Product Group – Filtration (1/2)

## Compressed Air & Gas Treatment Filters

- Low, Med, High Pressure Filters
- Sampling Filter
- Refrigerated Dryer
- Modular Dessicant Dryer
- Twin Tower Dessicant Dryer
- Water Chillers



## Engine & Mobile Filtration

- Fuel Filter / Water Separators
- High Flow Fuel Filtration System
- By-pass Oils Filters
- Air Intake Filters



## Hydraulic Filtration

- Low, Med, High Pressure Filters
- Filter Cart
- Condition Monitoring
- Purification Systems



## Gas Generations

- Industrial Gas Generation
- Laboratory Gas Generation
- Pressure Swing Absorption (PSA)
- Hollow Membrane Fiber



## Parker Sub Brands

- Airtek
- Balston
- Domnick Hunter
- Finite
- Hiross



# Product Group – Filtration (2/2)

## Process Filtration

- Liquid Membrane Filters
- Sterile Air Filters
- Stainless Steel Filter Housing
- Validation Equipment



## Parker Sub Brands

- Kittiwake
- Racor
- Twin Filter
- Velcon
- VMT
- Zanders

## Water Purification

- Reverse Osmosis
- Modular System
- Customized Systems
- Water Treatment Accessories





# Product Group – Fluid Connectors

## Hose & Hose Fittings

- Hydraulic Hose
- Push-Lok Hose
- Transportation Hose
- Hose Fittings in Steel & S.S.
- Crimpers



## PolyFlex

- Oil & Gas (Black Eagle up to 3" / 15,000 psi)
- Ultra High Pressure (up to 55,000 psi)
- Hose Fittings in Steel & S.S.



## Tube Fittings

- Ermeto (EO/EO 2) DIN fittings
- Triple-Lok
- D-Lok
- Steel / S.S., SAE Flanges



## Pariflange F37

- Non-welding Tube connection System
- Designed for HP tube from 1/2" to 6"
- Flaring Machine (Pariflange)
- DNV / ABS



## Quick Couplers

- Low, Medium & High Pressure
- Rectus couplers up to 35 bar (Safety self-venting valve)
- Brass, Steel, SS & thermoplastics
- Tema Couplers up to 1,600 bar, ISO Profile, Steel, Brass, S.S., non-drip & dry-break.



## Parker Sub Brands

- Ermeto
- Legris
- Rectus
- Snap-Tite
- Tema



# Product Group – Hydraulics

## Pumps

- Piston Pumps
- Vane Pumps
- Gear Pumps



## Accumulators & Cooling Fans

- Piston Accumulators
- Olaer Bladder Accumulators
- Diaphragm Accumulators
- Accumulators Charging kit & Mounting Accessories



## Cylinders

- 3L series
- 2 & 3H series
- HMI series
- Custom Design Cylinders



## Valves

- Directional Control Valves
- SAE Flange Valves
- Proportional Directional Control Valves



## Motors

- Calzoni Radial Piston LSHT
- Low Speed High Torque Voac LSHT Motor



## Parker Sub Brands

- Chelsea
- Commercial
- Denison
- Olaer
- Voac



# Product Group – Automation (1/2)

## Electromechanical

- Visualization – HMI
- Servo Drive
- Programmable Automation Controller
- Linear & Rotary Positioners
- Electric Cylinders
- Linear Servo Motor
- Rotary Servo Motors
- Gearheads & Gear Motors
- Automation System



## Drives

- AC Drives
- DC Drives
- Solar Panel System



## Parker Sub Brands

- Compumotor
- Daedal
- Hauser
- Kuroda
- Origa
- SSD



# Product Group – Automation (2/2)

## Pneumatics

- Cylinders & Actuators
- Control Devices
- Air Preparation



## Fluid Control Valves

- General Purpose
- Explosion Proof (EEx)
- Proportional Regulators



## Precision Fluidics

- Diaphragm Pumps
- Smart Syringe Pumps
- Miniature Solenoid Valves
- Miniature Proportional Valves
- Active Controls
- Fluidic Systems



## Accessories

- LEGRIS Pneumatic Fittings & Accessories
- Push-In Fittings (4 to 14mm)
- PU, PA tubing colors
- Pneumatic Function Fittings
- Brass Nickel Plated & SS
- Push-In Fittings
- Blowguns



## Parker Sub Brands

- Legris
- Rectus
- SCEM
- Gold Ring
- Sinclair Collins
- Lucifer



# Product Group – Engineered Materials



## Engineered Materials - Seals

- Extruded Product
- Custom Molded Seals
- Metal Seals
- Composite Seals
- O-rings & Packing's
- PTFE Seals
- Rotary Shaft Seals
- EMI Shielding
- Thermal Management
- FFKM Seals For Extreme Applications
- Extruded Packer Elements
- Gimbal Assembly Rendering
- Oil & Gas Elastomer Products

### Certifications & Agency Approval

- Norsok & Rgd Test & Cert
- Aerospace & Military Specified
- FDA, NSF, USP Class VI

## Parker Sub Brands

- Sporlan
- RS
- Herl



# Product Group – Instrumentation

## Fittings

- CPI / A-Lok Tube Fittings
- MFI
- Autoclave
- UHP Fittings
- PFA Fittings



## Valves

- Needle & Ball Valves
- Filter, Check & Relief Valves
- Manifold Valves
- UHP Valve
- Chemical Valve



## Pressure Regulator



## Mass Flow Control

- Gas & Liquid Flow Control



## Analytical Systems

- Vent Master
- Change Over System
- Rmax



## Parker Sub Brands

- AutoClave
- Partek
- PGI
- Porter
- Veriflo

## Product Overview



# Our Strengths



- Global Extensive
- Engineering Background
- Division & Local Practical Application Expertise
- Depth & Breadth of Products
- Value System Solution
- Single Components to Complete System
- Vendor Reduction





# Product Families ?

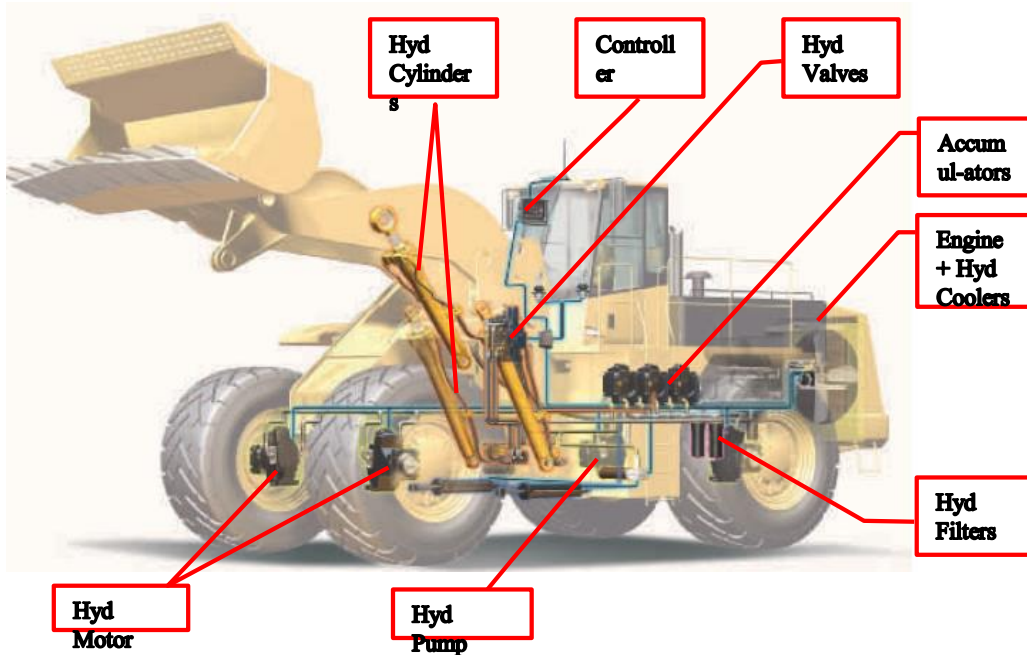
## Various Products !!!



- Accumulators
- Coolers
- Cylinders
- Hand Pumps
- Motors
- Power Units
- PTO
- Pumps
- Pumps/Motors
- Rotary Actuators
- Sensor & Switches
- Valves & Controls



Here We are.....



# Key-Products

## Accumulators



## Coolers



## Cylinders



## PTO



## Pumps & Motors



## Valves



# Accumulators

Bladder



Piston



Diaphragm



Gas Bottle & Reservoir isolators



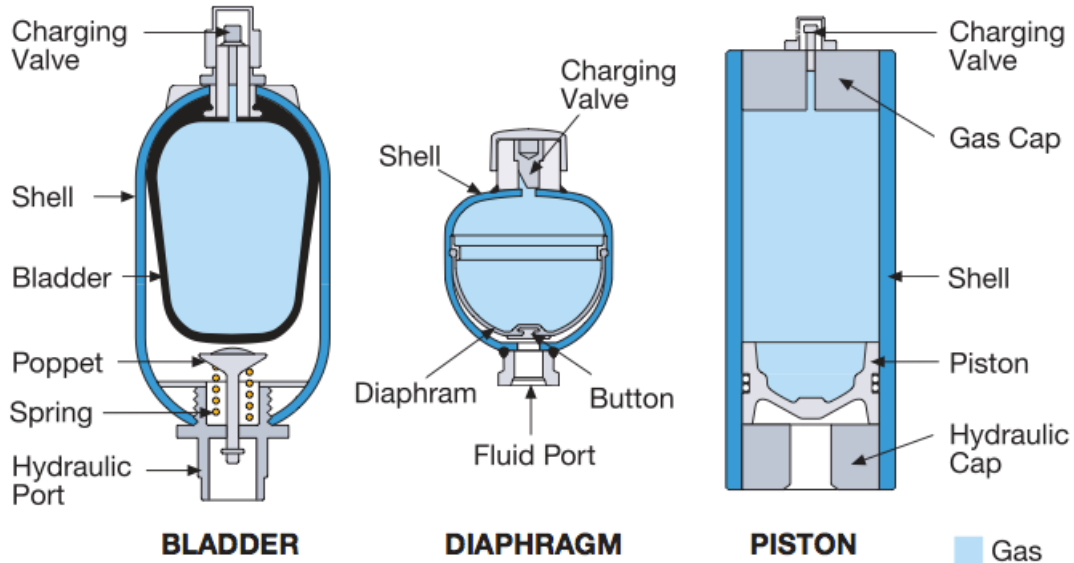
Pulsation Damper



Inline Pulse-Tone (Shock Suppressor)



# Design Features and Construction



# Accumulators

## Accessories

Charging Kit



Safety Block



Mounting Accessories



# Accumulators



## Certifications



ISO 9001:2008



CCS



CE 0036  
Module B



CE 0036  
Module D



ASME  
"U" Stamp



ABS  
Design



ABS  
Manufacturing



SELO  
TS2210A83-2014



LR



AS1210



# Certifications for Global Requirement



- DNV – Det Norske Veritas
- CE/PED – Pressure Equipment Directive
- ASME – American Society of Mechanical Engineers
- ABS – American Bureau of Shipping
- NR-13 – Brazilian Pressure Vessel Standards
- AS1210 – Australian
- SELO – Chinese
- CCS – China Classification Society
- CSA/CRN – Canadian Registration Number
- LR – Lloyd's Registered





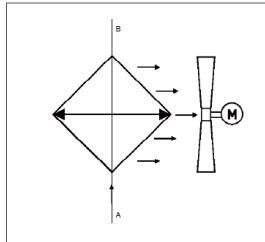
# Coolers

- Parker-Olaer Cooler Product Line Overview

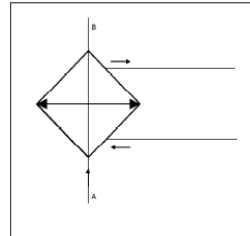


# Coolers

## Air Blast Type



## Water Cooled Type



# Air Blast Coolers

## Product

Oil/air coolers



**LAC**  
AC motor

### Features

- Cooling capacity up to 300 kW
- Compact and light weight
- Quiet fan and fan motor
- Single-phase or three-phase AC motor
- Low pressure drop
- High cooling capacity
- Service-friendly and easy to retrofit
- **LAC-X** for ATEX requirements
- **LAC- M** for marine environments

### Applications

- Power units
- Lubrication systems
- Marine cranes
- Presses
- Wind power



**LHC**  
Hydraulic motor

### Features

- Cooling capacity up to 160 kW
- Compact and light weight
- Quiet fan and fan motor
- Hydraulic motor up to 25,2 cm<sup>3</sup>/r
- Low pressure drop
- High cooling capacity
- Service-friendly and easy to retrofit
- **LHC-X** for ATEX requirements
- **LHC- M** for marine environments

### Applications

- Forestry machines
- Mining machines
- Crushing machines
- Marine cranes



**LOC**  
Circulation

### Features

- Cooling capacity up to 45 kW
- Compact and light weight
- Quiet fan and fan motor
- Integrated circulation pump
- Low pressure drop
- High cooling capacity
- Service-friendly and easy to retrofit

### Applications

- Power units
- Lubrication systems
- Marine winches
- Presses
- Wind power



**LDC**  
DC motor

### Features

- 12V or 24V DC motor
- Compact and light weight
- Maximal cooling capacity 30 kW
- Can be fitted with Smart DC Drive

### Applications

- Truck cranes
- Body builders
- Minir~



# Water Cooled Type Coolers

## Products

### Oil/water coolers



**PWO  
Brazed**

- Working pressure 15 bar @ + 155° C
- Maximum working temperature + 225° C
- Cooling capacity up to 500 kW
- Flow range up to 1600 l/min
- Light and compact
- Suitable for many applications
- Ease to install
- Cost efficient and environmentally friendly
- Wide range



**GWO  
Gasketed**

- Working pressure from 0-25 bar
- Working temperatur from -30° C to +180° C
- Flow ranges from 0 to 4600 m<sup>3</sup>/h
- Efficient and compact
- Openable for mechanical cleaning
- Expandable for future capacity increases
- The gaskets limits the working temperature and does not fit all fluids



**SWO  
Shell & Tube**

- Working pressure standard 15 bar
- Working temperature up to + 95° C
- Flow range up to 900 l/pr.min
- Cleaning without opening the hydraulic circuit
- Wide range
- Marine & Industrial series
- Gaskets limits the working temperature and does not fit all fluids



# Cylinders

## Industrial



▶ Electro-Hydraulic Cylinders



▶ Roundline Cylinders



▶ Tie Rod Cylinders



## Mobile



▶ Mobile Cylinders



▶ Standard Build



# Tie Rod Cylinders – Industrials

## - 2H & 3H Hydraulic Cylinders

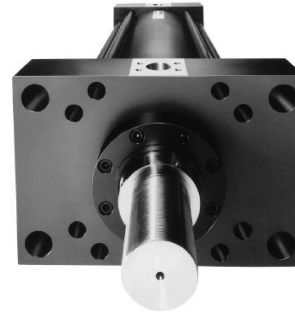
Heavy Duty Tie Rod Cylinders for Working Pressures up to 210 bar  
Available Sizes

- Bore Diameters – 1.50" through 6.00" (2H Cylinders)
- Bore Diameters – 7" through 20" (3H Cylinders)
- Standard : Heavy Duty Service – ANSI/(NFPA) T3.6.7R2 - 1996 Specifications and Mounting Dimension Standards

[Catalogue HY08-1114-3/NA](#)



Series 2H



Series 3H



## - 3L Hydraulic Cylinders

Medium Duty Tie Rod Cylinders for  
Working Pressures up to 70 bar  
Bore Sizes : 1" through 8"

Standard : Medium Duty Service –  
ANSI/(NFPA) T3.6.7R2 - 1996

Specifications and Mounting

Dimension

[Catalogue HY08-1130-3/NA](#)



## - HMI/HMD Hydraulic Cylinders

Metric Tie Rod Cylinders for  
Working Pressures up to 210 bar  
Bore Sizes : 25mm through 200mm  
Standard : ISO 6020/2 and DIN 24

554

[Catalogue HY07-1150/UK POD 11/2007 PC](#)



# Electro Hyd Cylinders - Industrials

## - HMIX Hydraulic Cylinders with Integrated Transducers

Metric feedback cylinders for  
working pressures  
up to 210 bar  
Bore Size : 40 to 200mm



[Catalogue HY07-1175/UK POD 08/2010 TMCZ](#)



## Electro-Hydraulic Axes





# Cylinders – Mobiles



## MOBILE CYLINDER DIVISION PRODUCTS & CAPABILITIES

- TELESCOPIC CYLINDERS  
Single Acting  
Double Acting
- SINGLE STAGE "Rod Type" CYLINDERS  
Single Acting  
Double Acting
- BUILD TO CUSTOMER PRINTS OR PER  
APPLICATION SPECIFICATIONS
- BORE SIZES UP TO 20" DIAMETER
- STROKE LENGTHS UP TO 500"
- OPERATING PRESSURES UP TO 10,000  
PSI
- VARIOUS OPERATING FLUIDS
- BATCH SIZES 1PC TO 100's
- VARIOUS MATERIALS & COATINGS  
Stainless Steel  
Electroless Nickel  
Nitriding  
Chrome  
Double Chrome
- TYPICAL OPTIONS  
Load Holding Valves  
Electro-Hydraulic Transducers  
End of Stroke Hydraulic Cushions  
Protective Rod Boots  
Proximity Switches  
Flow Controls  
Flow Fuses

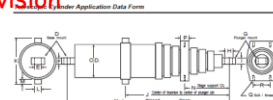
Catalogue (Mobile)

HY18-0001/US Rev B 2M, 07/04

Catalogue (Standard Build)

HY18-0014/US Rev B 2M, 01/04

To fill up the application  
data form & send to  
Division



Cylinder Application Data Form

Cylinder application \_\_\_\_\_

Single or double acting \_\_\_\_\_ System operating pressure Normal \_\_\_\_\_ Min \_\_\_\_\_ Max \_\_\_\_\_

O.D. of bore \_\_\_\_\_ Is there a seal area in system \_\_\_\_\_ Sealing \_\_\_\_\_

O.D. largest mounting flange \_\_\_\_\_ System flow in G.P.M. Min \_\_\_\_\_ Max \_\_\_\_\_

Number of mounting stages \_\_\_\_\_ System operating temp. Normal \_\_\_\_\_ Min \_\_\_\_\_ Max \_\_\_\_\_

Chrome or non-chrome rings \_\_\_\_\_ Piston type \_\_\_\_\_

Mounting conditions \_\_\_\_\_ Min \_\_\_\_\_ Max \_\_\_\_\_ Stroke angle \_\_\_\_\_ Load holding requirements \_\_\_\_\_

Any side or eccentric loading possible \_\_\_\_\_ Environmental condition \_\_\_\_\_

A Total stroke \_\_\_\_\_ J Plunger pin to bottom C.L. of assembly \_\_\_\_\_

B Closed length \_\_\_\_\_ K Transition detail width \_\_\_\_\_

C Open length \_\_\_\_\_ L Transition leg dimension \_\_\_\_\_

D Base mount type or code \_\_\_\_\_ M Transition leg length \_\_\_\_\_

E Base pin diameter \_\_\_\_\_ N Plunger pin to stage support or aperture \_\_\_\_\_

F Base mount width \_\_\_\_\_ O Stage support width \_\_\_\_\_

G Plunger mount type or code \_\_\_\_\_ P Stage support thickness \_\_\_\_\_

H Plunger pin diameter \_\_\_\_\_ Q Stage support bolt & thread size \_\_\_\_\_

I Plunger mount width \_\_\_\_\_ R Stage support bolt location & C.L.S. \_\_\_\_\_

Special mounting or assembly \_\_\_\_\_

Extend port size and type \_\_\_\_\_ Extend port location \_\_\_\_\_

Retract port size and type \_\_\_\_\_ Retract port location \_\_\_\_\_

Special features or comments \_\_\_\_\_

Requested by: Firm \_\_\_\_\_ Contact: \_\_\_\_\_

Address \_\_\_\_\_ Title \_\_\_\_\_ Dept. \_\_\_\_\_

City \_\_\_\_\_ State \_\_\_\_\_ Zip \_\_\_\_\_

Phone \_\_\_\_\_ Fax \_\_\_\_\_

Contact \_\_\_\_\_

Phone (800) 940-0570 \* 330-480-9431 \* Fax (800) 694-2302 \* 330-480-9432



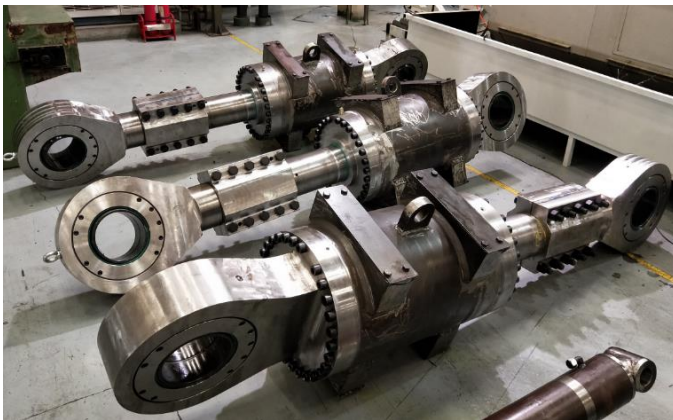
132

Hydraulic Cylinder Division  
Parker Hannifin Corporation



# Custom Made Cylinders

Any Type ! Any Shape !



# MHDC Mobile Hydraulic Product

Mobile Hydraulic Division China



# Parker – Pumps & Motors



- Pumps & Motors
- Fixed & Variable
- Multiple Technologies
  - Axial Piston
  - Bent Axis Piston
  - Radial Piston
  - Gear
  - Vane
  - LSHT (Torque Motors)





# Pump Product line

High



Premier (420 bar) - 80, 110, 140, 200, 260



C Series (420 bar)- 55, 81, 136



PV+ (350 bar) – 16,23, 46, 92, 180, 270, 360



Gold Cup (350 bar) - 100, 120, 180, 230, 400, 500



P2/P3 (320 bar) - 60, 75, 105, 145



Mediu



P1/PD (280 bar) - 18, 28, 45, 60, 75, 100, 140,



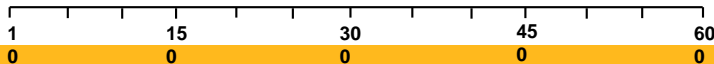
PVP (250 bar) - 16, 23, 33, 41, 48



Low



PAVC (210 bar) - 33, 38, 65, 100



# Hydraulic Motors



- Calzoni High Torque Radial Piston Motors  
Torque from 0.51~143 Nm/bar
- Gear, Gerotor & Piston Style
- Fixed & Variable Motors Available
- High Speed Motors
- Low Speed High Torque Motors (LSHT)

## Hydraulic Pump Division Products (HPD)



**PAVC**



**PVP**



**P1/PD**



**P2/P3**



**Premier**



**Gold Cup**

## Pump & Motor Division Products (PMDE)



**P2/P3  
(350bar)**



**PV+**



**Bent Axis Pumps & Motors**

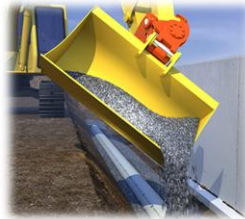
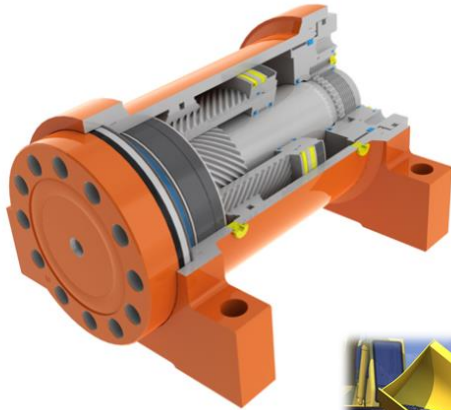


**Calzoni**



# Parker Acquires

## Hydraulic Rotary Actuator





# Product Families... Valves & Electronics



- Directional
- Pressure
- Flow
- Cartridge
- Proportional
- Electronics & Controls



# Products- Mobile Valves

## Directional Control Valve

- Open center (VA/VG 20/35)
- Load sensing (VPL, L90, K170, K220)
- Remote Valve (PCL401, 402)

## Auxiliary valves

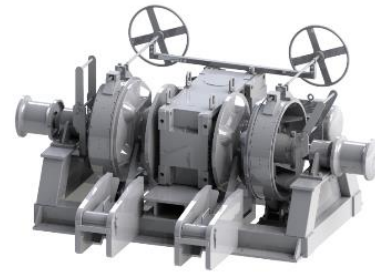
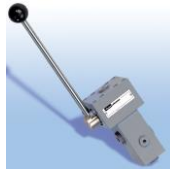
- Flow Divider, Priority Valve)., etc



# LOKOMECH

## STANDARD PRODUCTS

- CVG
- WM / WMH directional valves
- MMW winch control manifold
- MAW
- MFW
- RCV
- CMM



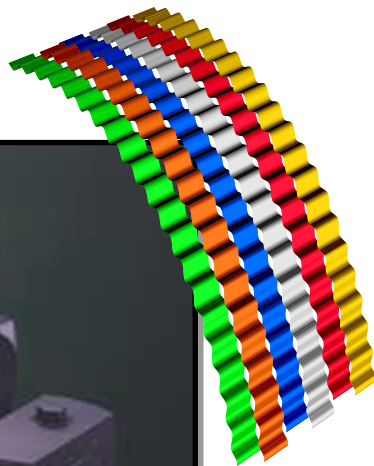
**MARINE – MARKET**



**Case by Case**



# Colorflow - Manatrol



# THE SYSTEM

## INCLUDES:

- Hydraulic Oil
- Hoses/tubing
- Fittings
- Filters
- Hydraulic Pump
- Directional Valve
- Actuator
  - motor
  - cylinder

# Power Units (System & Application Team)



- Customize Power Pack
- Engine Driven
- Electric Motor Driven
- SS316, Mild Steel Reservoir
- Totally Enclosed, open concept skid



# Our Experiences



**(Small)**

**1x0.75kW, 10L  
SS316 Tank for  
Diving Bell System**



**(Medium)**

**1x75kW, 500L  
Tank HPU for  
Utility Usage**



**(Large)**

**2x45kW, 1500L Tank  
with 5x50L  
Accumulators HPU  
for Man - Rider Winch**



# Various Types of HPU for Caterpillar(Berg) Propulsions



Tank 500 Lts  
7.5 Kw / 3 Kw  
Electric Motors  
Pitching-Clutch  
– Brake System  
Denison Low  
Noise Piston  
Pumps  
Major Marine  
Class  
Approvals  
ABS, BV, DNV  
EO Fittings &  
Tubing



Tank 200 Lts  
7.5 Kw  
Electric  
Motors  
Denison Low  
Noise Piston  
Pumps  
Major Marine  
Class  
Approvals  
ABS, BV,  
DNV  
EO Fittings  
& Tubing



Tank 420 Lts  
11 Kw  
Electric  
Motors  
Denison Low  
Noise Piston  
Pumps  
Major Marine  
Class  
Approvals  
ABS, BV,  
DNV  
EO Fittings  
& Tubing



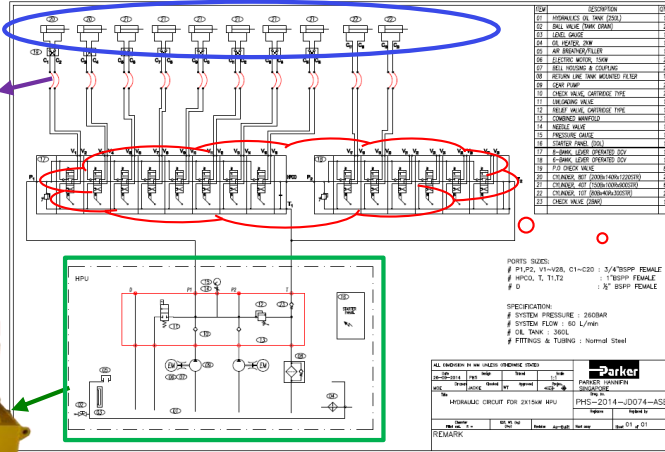
Tank 600 Lts  
22 Kw / 3 kw  
Electric Motors  
Steering Tank  
Hydraulic System  
( Thruster )  
Denison Low  
Noise Piston  
Pumps  
Major Marine  
Class Approvals  
ABS, BV, DNV  
EO Fittings &  
Tubings





## Success Stories

# Complete Solution



# Value Added Service (After Sale Support)

Hydraulic Repair/Overhaul Station - 100 HP Test Rig & Flushing Skid



# Our Sources

- China
- Japan (Taiyo)
- Europe
- United State



A dark globe of the Earth is centered in the image. The continents of North and South America are visible, with city lights glowing on the landmasses. A complex network of thin, golden-yellow lines crisscrosses the globe, representing a global communication or data network. The background is a dark, starry space.

**THIS IS PARKER**

**ENGINEERING YOUR SUCCESS**



**THANK YOU**

